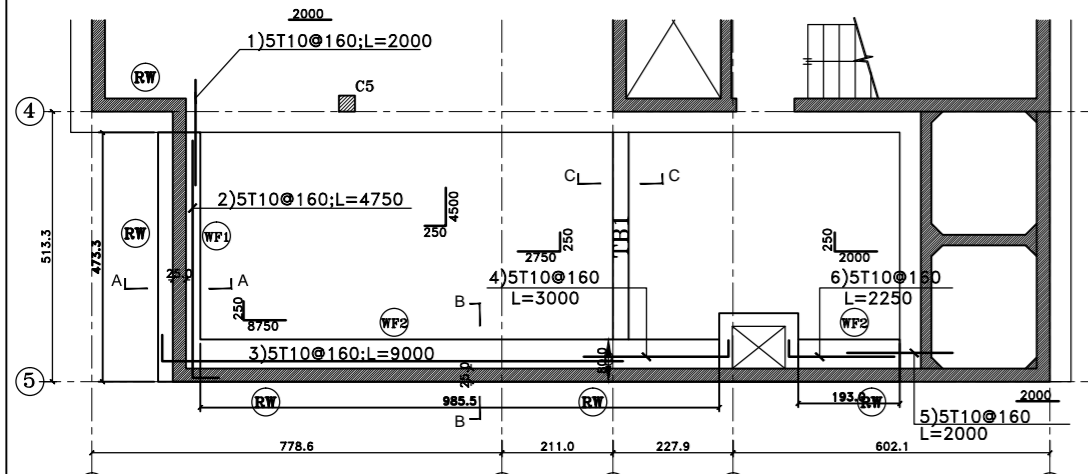
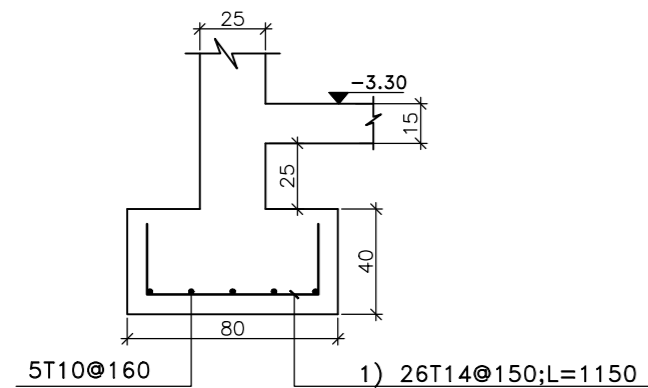


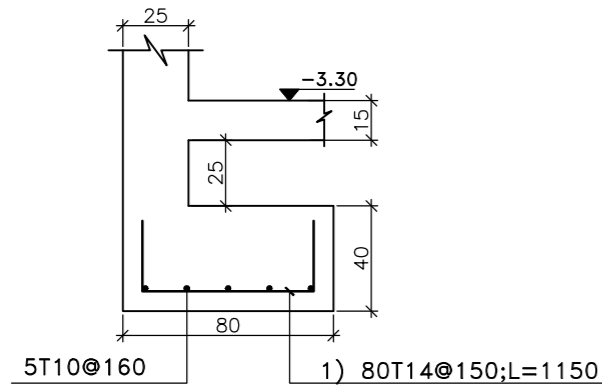
# REINFORCEMENT OF STRIP FOOTINGS & TIE BEAMS



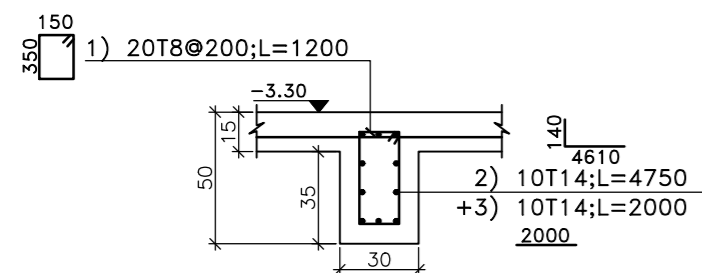
STRIP FOOTING-LONGITUDINAL REINFORCEMENT  
sc 1/100



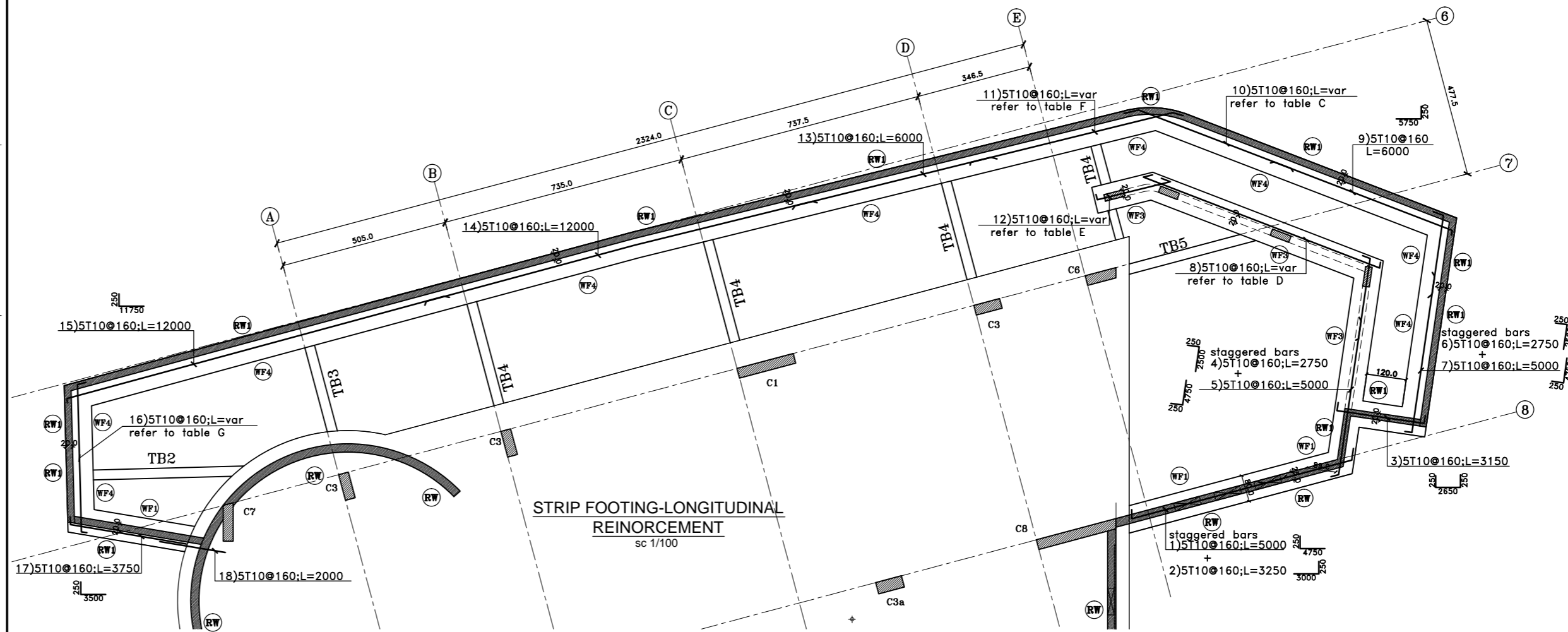
SECTION A-A  
STRIP FOOTING WF1 at axis (F;(4;5))  
sc 1/20



SECTION B-B  
STRIP FOOTING WF2 at axis 5  
sc 1/20



SECTION C-C  
TIE BEAM TB1 AT AXIS H  
sc 1/20



STRIP FOOTING-LONGITUDINAL REINFORCEMENT  
sc 1/100

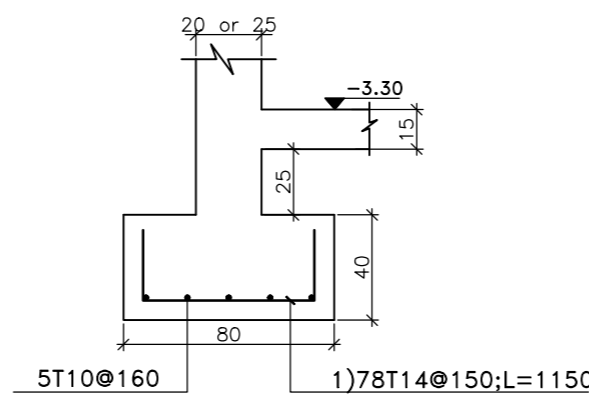
TABLE C			
diam	nb	length	shape
10	1	5750	250 5500
10	1	5500	250 5250
10	1	5250	250 5000
10	1	4750	250 4500
10	1	3750	250 3500

TABLE D			
diam	nb	length	shape
10	1	7800	250 7300
10	1	8100	250 7600
10	1	8350	250 7850
10	1	8650	250 8150
10	1	8900	250 8400

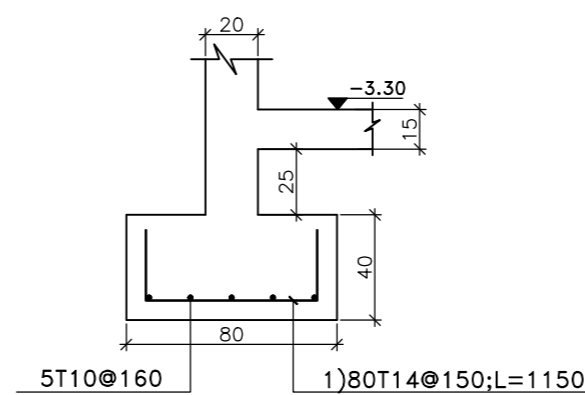
TABLE E			
diam	nb	length	shape
10	1	2250	250 1750
10	1	2500	250 2000
10	1	2750	250 2250
10	1	2950	250 2450
10	1	3200	250 2700

TABLE F			
diam	nb	length	shape
10	1	5250	250 5000
10	1	6250	250 6000
10	1	6500	250 6250
10	1	6750	250 6500
10	1	7250	250 7000

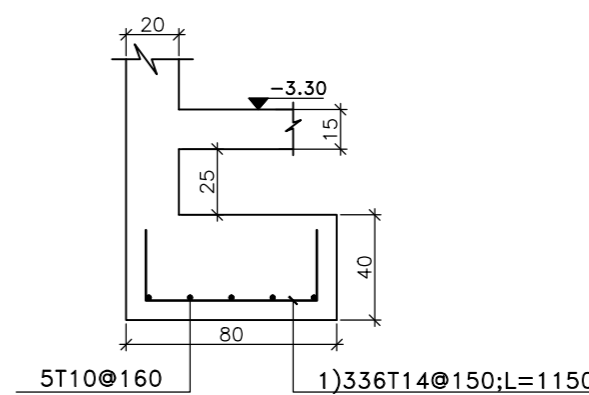
TABLE G			
diam	nb	length	shape
10	1	5050	250 4550
10	1	5000	250 4500
10	1	4900	250 4400
10	1	4850	250 4350
10	1	4750	250 4250



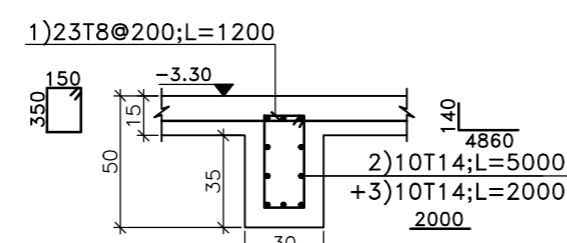
STRIP FOOTING WF1  
sc 1/20



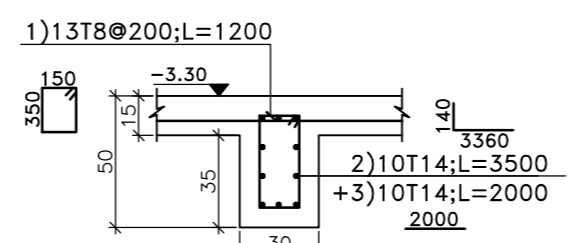
STRIP FOOTING WF3  
sc 1/20



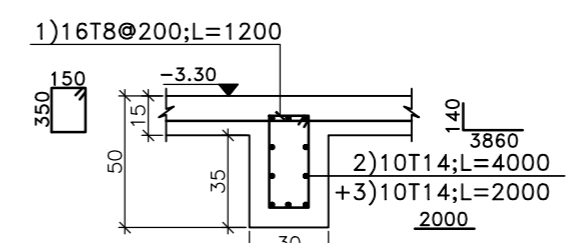
STRIP FOOTING WF4  
sc 1/20



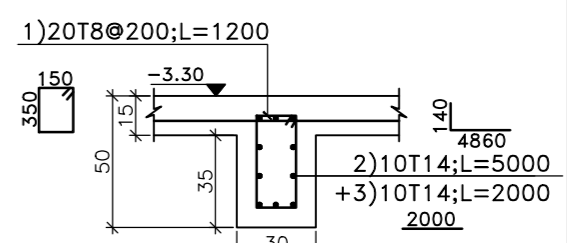
TIE BEAM TB2  
sc 1/20



TIE BEAM TB3  
sc 1/20

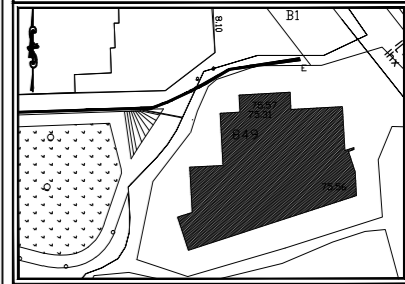


TIE BEAM TB4 (NB=4)  
sc 1/20



TIE BEAM TB5  
sc 1/20

## RAHMEH SCHOOL PROJECT



### Consultant:

**FAST & ASSOCIATES** s.a.r.l.  
MOBILE PHONE : +961-(0)3-443141  
TELEPHONE / FAX : +961-(0)6-411621  
E-MAIL : info@fast-associates.com  
c.fatfat@fast-associates.com

### Structural designer:

**ME** ENGINEERING  
Civil Engineer: Haytham Fouad Mawlawi  
Tripoli-Maarad-Obeid Center-GR floor  
Tel : 03-450733 Fax : 06-411621  
e-mail : h.mawlawi@hotmail.com

### Contractor:

**vertex group**  
VERTEXGROUP.COM.CO  
Tripoli-Maarad-MEA Bldg-10th floor  
Tel : 06-205 504

### NOTES

- concrete cover for footings & tie beams 7.5cm
- compressive strength at 28days fc28=250kg/cm2
- yield strength is 4200kg/cm2

rev	description	drawn by	verified by	date

### PROJECT:

**RAHMEH SCHOOL BUILDING**  
PHASE: Shop Drawing  
DRAWING NUMBER & TITLE: S501H  
STRIP FOOTINGS & TIE BEAMS REINFORCEMENT DETAILS

Dwg. Reference:	Revision Number :
S-03	0
Format	Scale
A1	as shown
Revision Issue Date :	16-12-2011